

DYNABOLTER V3.0



SAFE. EXTENDED REACH. PROVEN.

DynaBolter

DynaBolter V3.0

By combining a larger chassis with the features that make the DynaBolter V2.0 such a great machine, the DynaBolter V3.0 allows for a higher boom reach (8052mm or 26'-5"), longer bolt length (2438mm or 8'-0") and an increased working envelope.

With the increased capability one might assume this limits the machines versatility, however standing just over 2000 mm (78.8") tall the V3.0 still maintains a low profile.

Combine this low height with a boom that can rotate 270 degrees to stow on the back of the machine and you have a bolter with large capability and maximum versatility.



ADVANTAGES

Unsurpassed Safety

DynaBolter operators are able to install bolts from the safety of the cabin.

Multiple-Bolt Carousel

The multiple-bolt carousel improves efficiency by decreasing the time required to reload after each bolt is installed.

Intuitive Controls

Dual joystick controls and onboard LCD operation screen make training DynaBolter operators easy.

Automated Epoxy Injection

The automated epoxy injection system takes the guess work away from the DynaBolter operator.

Low Profile

The DynaBolter's low profile design allows the operator to navigate through restrictive mines with low backs and tight drifts.



TECHNICAL SPECIFICATIONS

Safety

- Warning indicator lights and gauges
- Back-up alarm
- ROPS/FOPS certified canopy
- Low mount amber strobe light
- Check fire suppression and control system
- Fire extinguisher
- SAHR (spring applied, hydraulically release) parking brake
- Hydraulics cut-out when machine in gear
- All functions automatically disable when door is open
- No hydraulic lines in cab
- Dust suppression collection system (optional)



Controls

- Dual joysticks with thumb rockers control: outriggers, boom, head, drill & bolt functions
- Electro-hydraulic control
- Inclinometer



Working Capacity

- Boom swing: 270 degrees
- Install 2438mm (8'-0") bolts in a 2896mm (9'-6") back
- Capable of multiple bolt diameters
- Adaptable to shell or epoxy style bolts
- 6-bolt carousel
- Horizontal bolting
- 20% grade bolting
- Maximum back height: 8052mm (317.0")
- Minimum back height: 2373mm (93.4")
- Maximum forward reach: 6248mm (246.0")

TECHNICAL SPECIFICATIONS

Chassis

- Overall height: 2000mm (78.8")
- Overall length: 8881mm (349.6")
- Overall width: 298mm (117.4")
- Ground clearance: 229mm (9.0")
- Wheelbase: 2530mm (99.6")

Engine

- 85 HP Diesel
- Meets Tier IV interim emissions standards
- Full authority electronic
- Engine monitoring system
- Emergency engine shutdown (optional)

Transmission and Drivetrain

- Power-shift automatic transmission
- Torque converter driven piston pump
- Full time four wheel drive
- Oscillating rear axle



Operator's Cab

- Single operator—sit down
- 178mm (7.0") onboard LCD operation screen
- Forward and rear facing cameras (optional)

Work Lights

- Front and rear LED work lights
- LED spotlight
- Extra fender mounted work lights

Drill Options

- Hydraulic rotary
- Hydraulic percussion drifter

Automated Epoxy Injection (Optional)

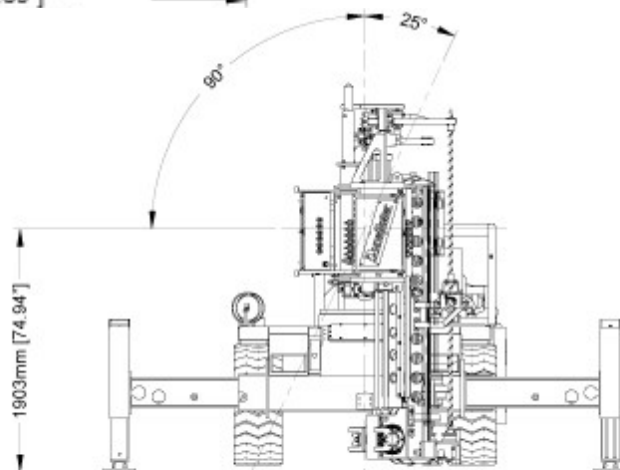
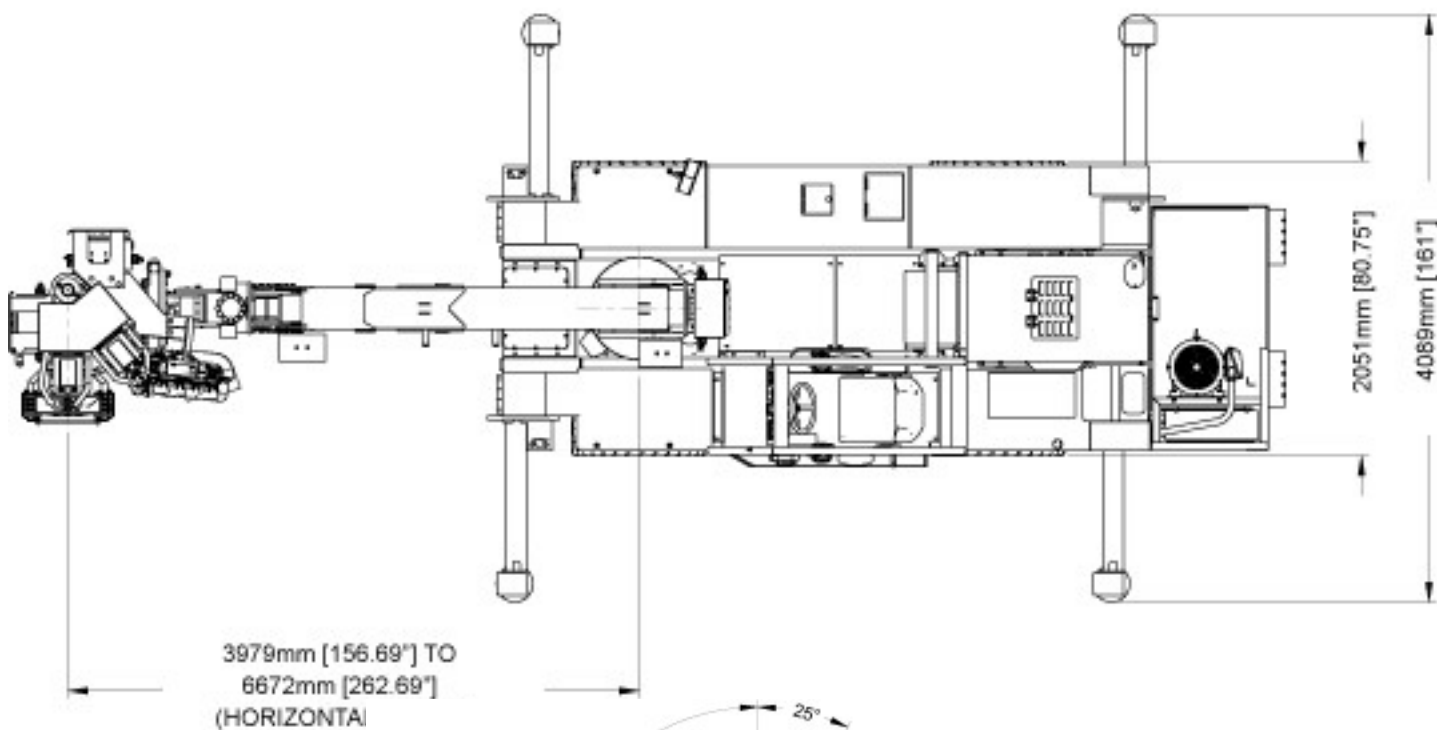
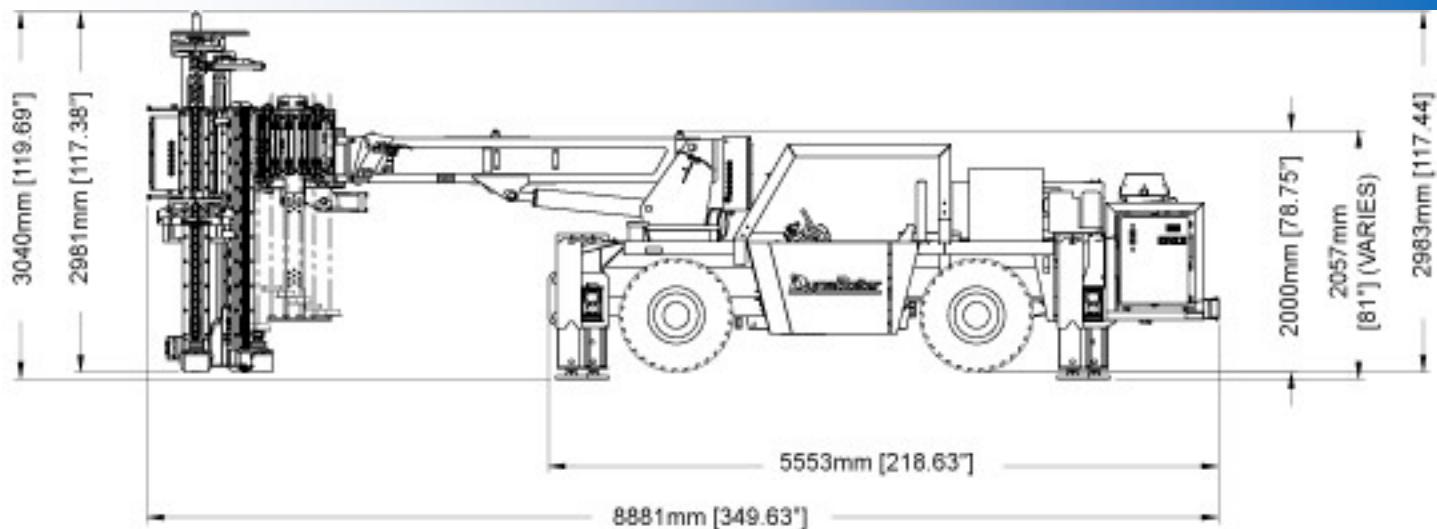
- Epoxy injection controlled from operator's cab
- Epoxy injected using hydraulically driven compressed air
- Separate arm switch and fire button prevents accidental discharge of epoxy
- Smart check system ensures all conditions are met before firing epoxy

Electric Power Pac (Optional)

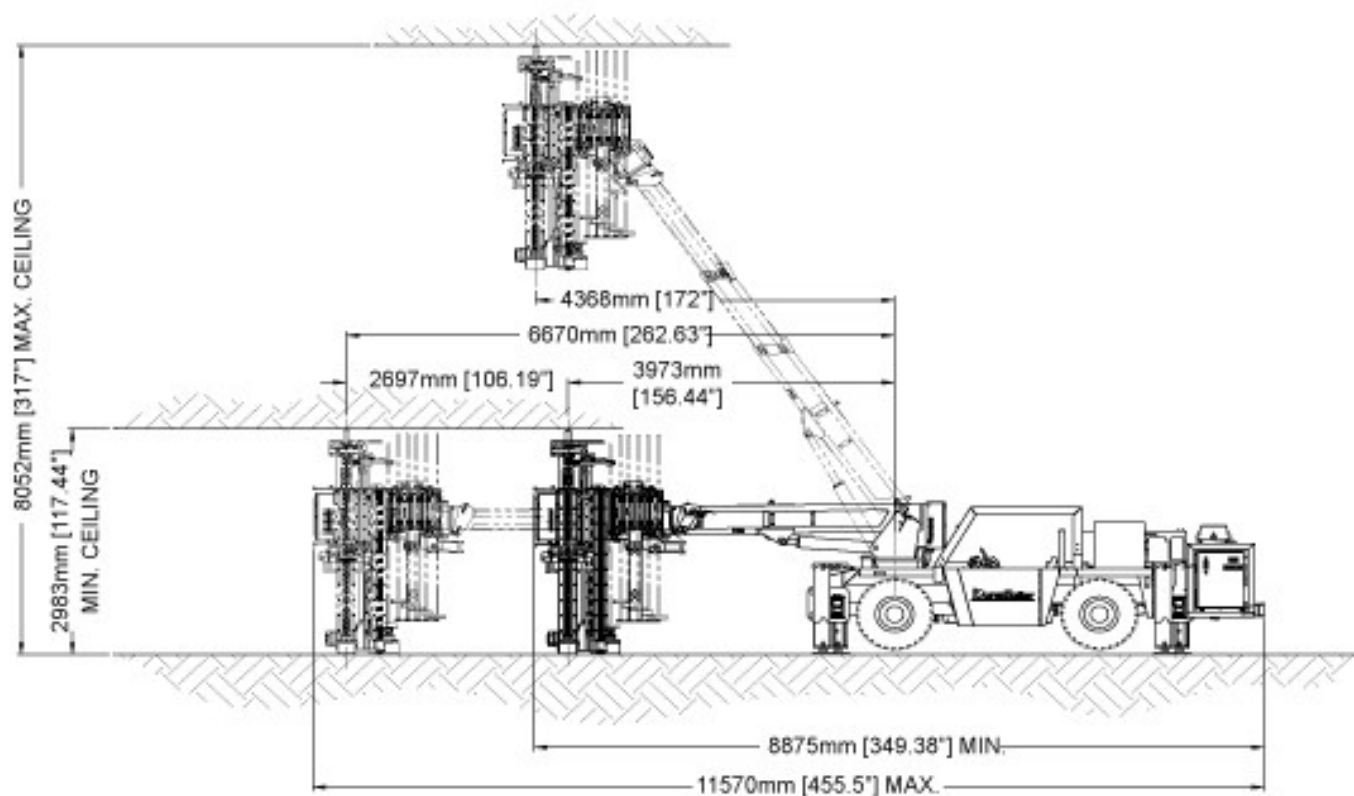
- 600 volt plug for drilling and bolting functions



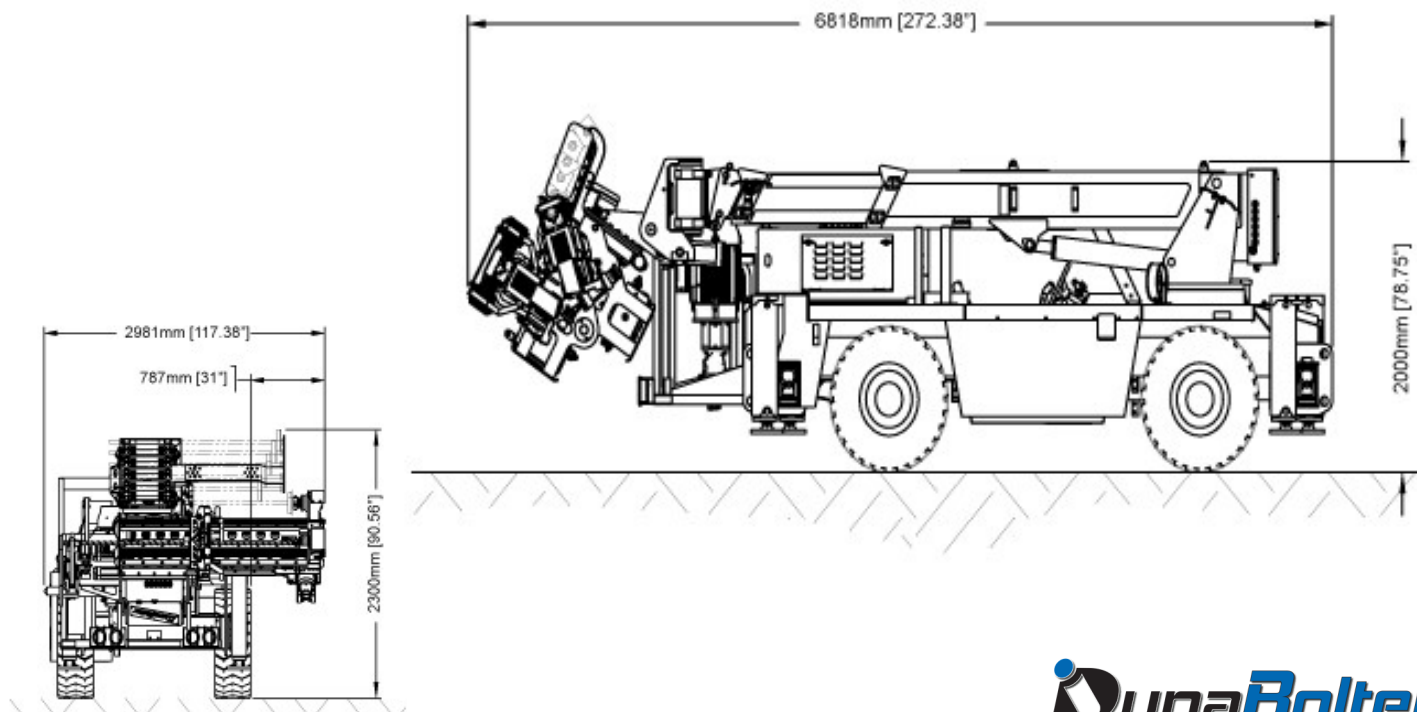
BOLTER GENERAL DIMENSIONS



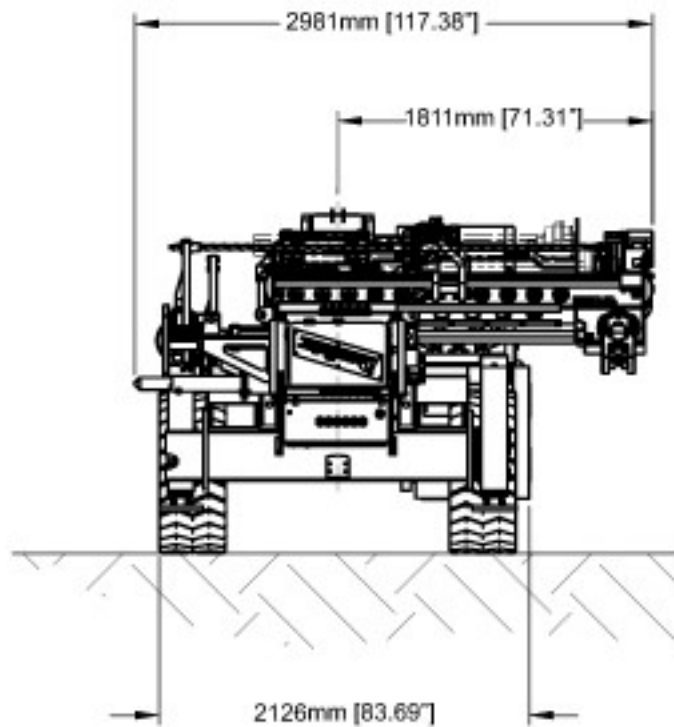
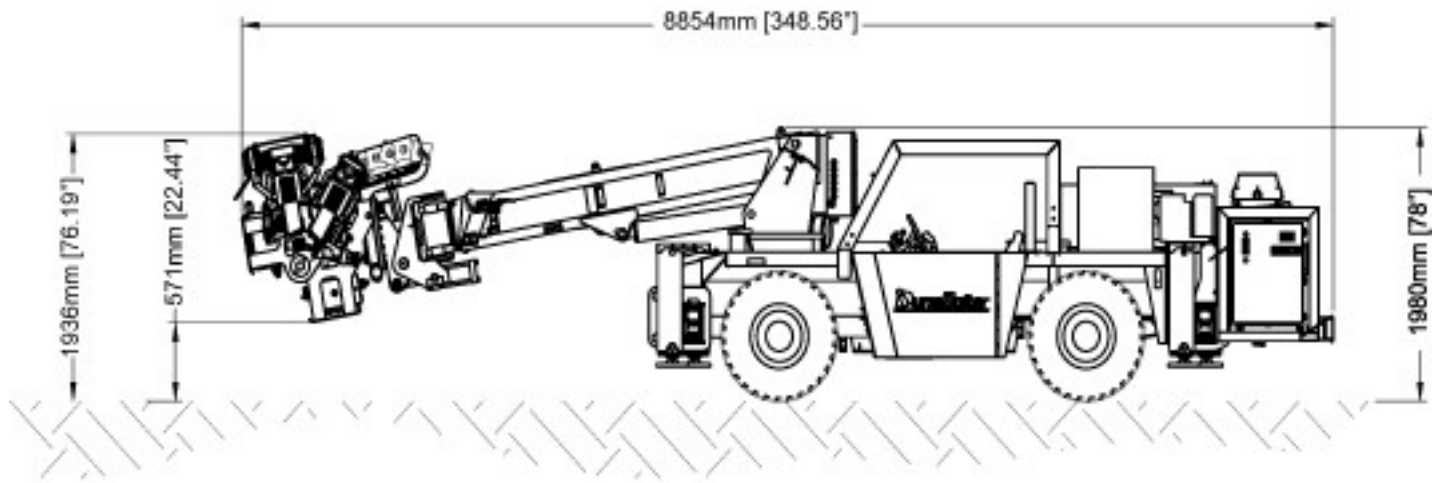
BOLTER OPERATING HEIGHT LIMITS



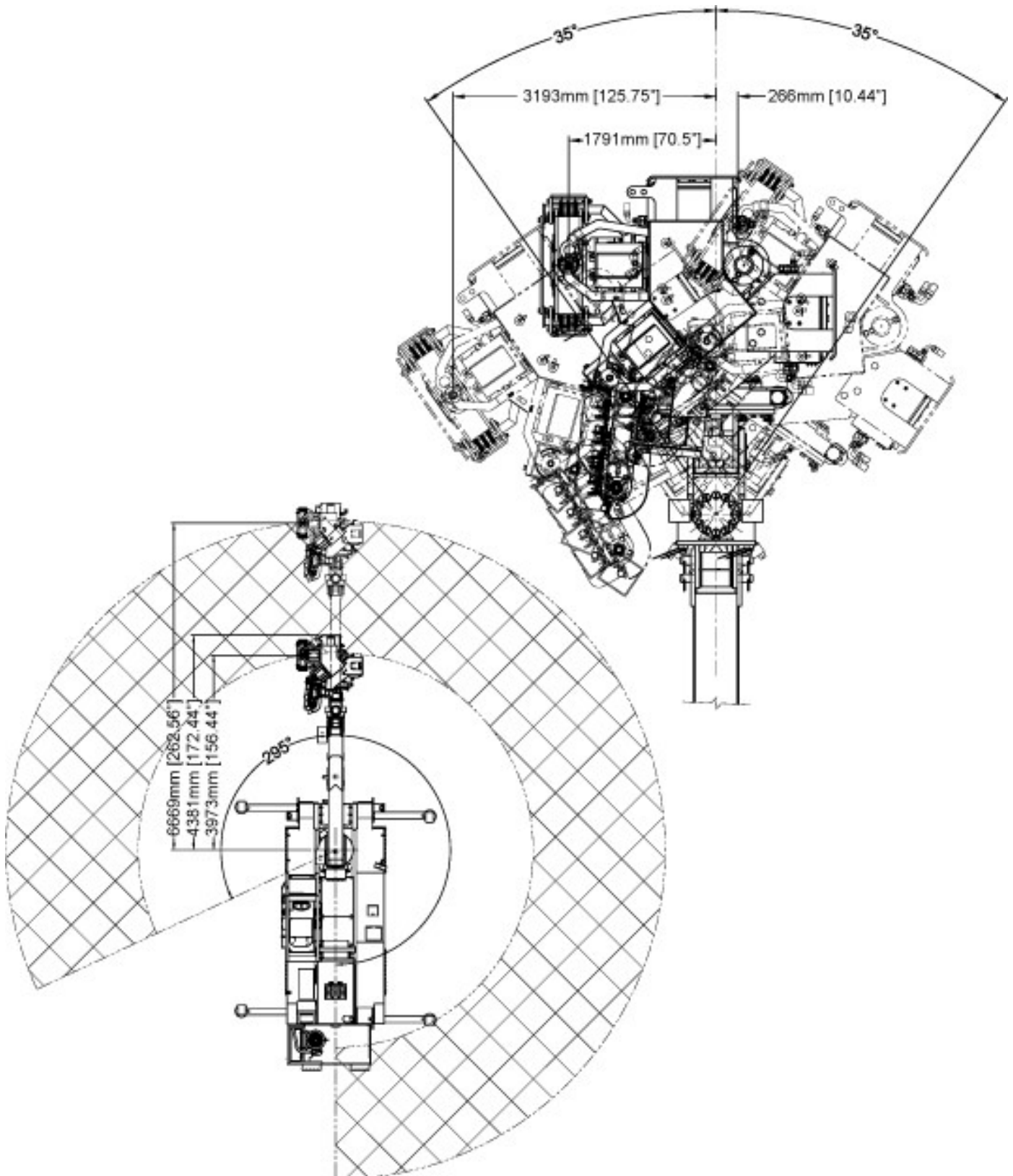
STOWED POSITION



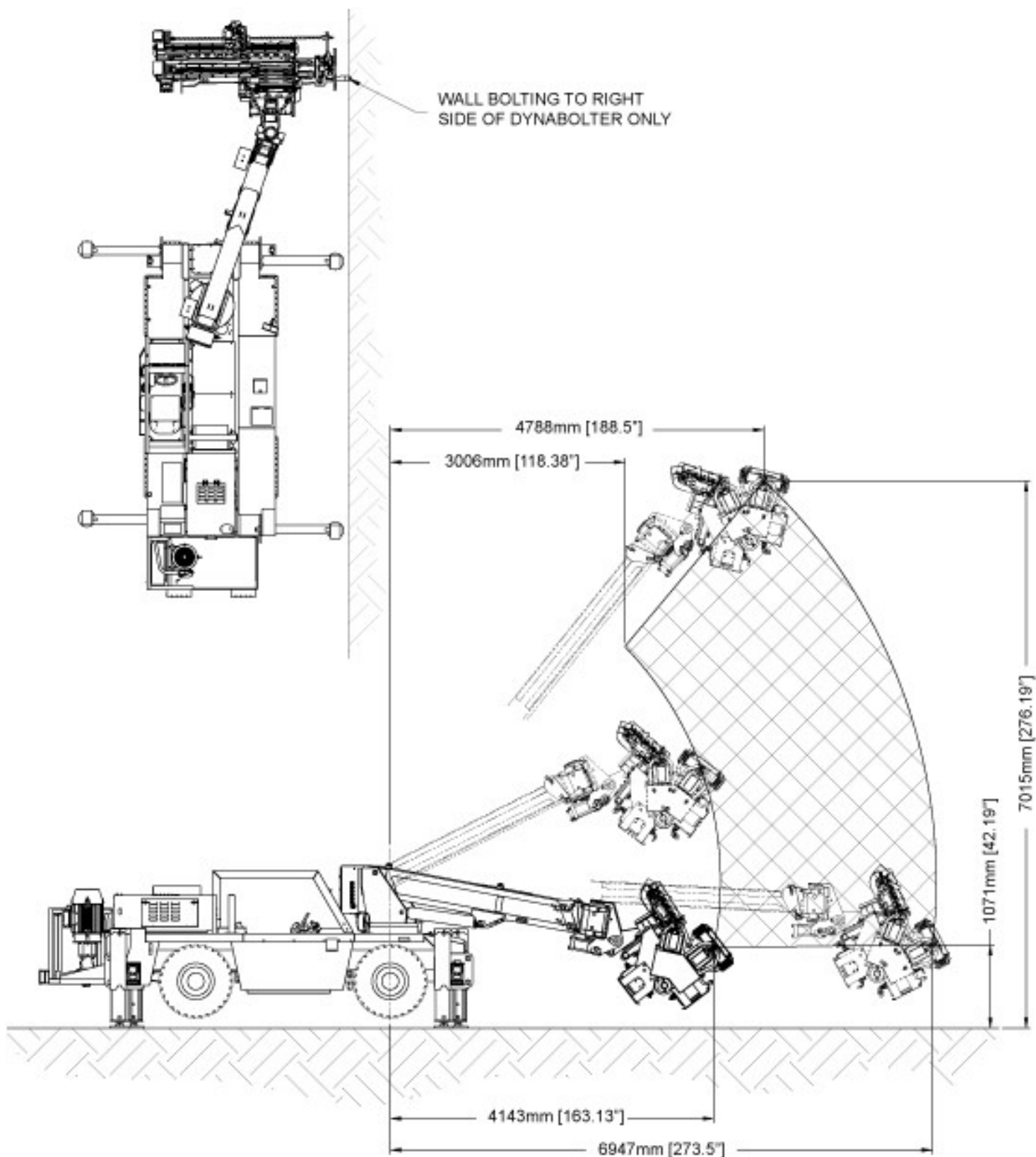
TRAVEL POSITION



BOLTER HEAD REACH LIMITS/HEAD PIVOT LIMITS



BOLTER WALL BOLTING AREA





***277 SHERWOOD ROAD
REGINA, SASKATCHEWAN , CANADA
S4P 3A2***

***OFFICE: (306) 359-7088
EMAIL: SALES@DYNABOLTER.COM
WEB: WWW.DYNABOLTER.COM***

