

DYNABOLTER V5.0



SAFE. RUGGED. COMPACT.

DynaBolter

DYNABOLTER V5.0



When safety counts, you can count on the DynaBolter to deliver a roof bolter that ensures employee's safety and maximizes productivity. The DynaBolter V5.0 is a semi-automated, single operator, roof bolter that safely installs bolts into the roof of an underground hard rock mine using a percussion drill. By providing an impact frequency up to 5000 BPM, a rotation speed up to 250 RPM and torque of 1000 foot pounds, the DynaBolter V5.0 drills into the backs of hard rock mines effortlessly.

ADVANTAGES

Unsurpassed Safety

DynaBolter operators are able to install bolts from the safety of the cabin.

Multiple-Bolt Carousel

The multiple-bolt carousel improves efficiency by decreasing the time required to reload after each bolt is installed.

Intuitive Controls

Dual joystick controls and onboard LCD operation screen make training DynaBolter operators easy.

Automated Epoxy Injection

The automated epoxy injection system takes the guess work away from the DynaBolter operator.

Low Profile

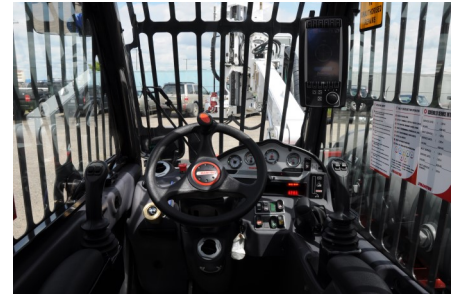
The DynaBolter's low profile design allows the operator to navigate through restrictive mines with low backs and tight drifts.



TECHNICAL SPECIFICATIONS

Safety

- Warning indicator lights and gauges
- Back-up alarm
- ROPS/FOPS certified canopy
- Low mount amber strobe light
- Check fire suppression and control system
- Fire extinguisher
- SAHR (spring applied, hydraulically release) parking brake
- Hydraulics cut-out when machine in gear
- All functions automatically disable when the door is open
- No hydraulic lines in cab

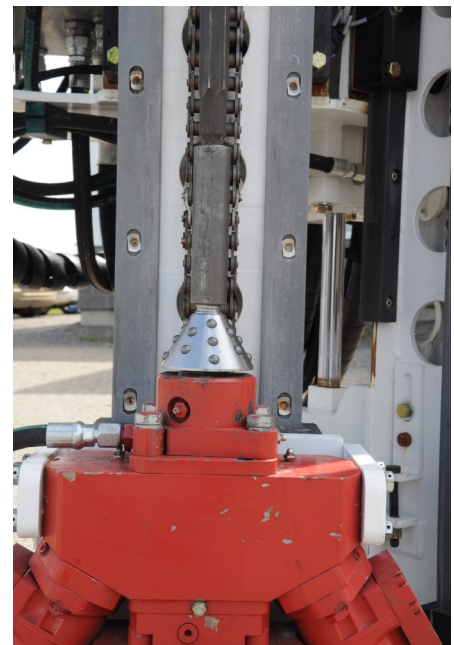


Controls

- Dual joysticks with thumb rockers control: outriggers, boom, head, drill and bolt functions
- Electro-hydraulic control

Working Capacity

- Boom swing: 24.5 degrees left and right
- Install 1500mm (59.0") bolts in a 2100mm (83.0") back or 1800mm (71.0") bolts in a 2400mm (94.0") back
- Capable of multiple bolt diameters
- Adaptable to shell or epoxy style bolts
- 6-bolt carousel
- Maximum back height: 5900mm (232.3")
- Minimum back height: 2529mm (99.6")
- Maximum forward reach: 9657mm (380.2")
- Hydraulic powered high torque percussion drill



TECHNICAL SPECIFICATIONS

Chassis

- Overall height: 2098mm (82.6")
- Overall length: 4760mm (187.0")
- Overall width: 2260mm (89.0")
- Ground clearance: 229mm (9.0")
- Wheelbase: 2810mm (111.0")



Engine

- 94 HP turbocharged diesel
- Meets Tier IV interim emissions standards
- Engine protection shut-down system
- Neutral safety start



Transmission and Drivetrain

- Power-shift automatic transmission
- 3 mode hydraulic steering
- 2 or 4 wheel drive
- Torque converter transmission
- F-N-R selector mounted on steering wheel
- High load capacity drive and steer axles
- Limited slip differential
- Rear-wheel, hydraulic power steering



TECHNICAL SPECIFICATIONS

Operator's Cab

- Single operator—sit down
- 178mm (7.0") onboard LCD operation screen
- Forward and rear facing cameras (optional)

Work Lights

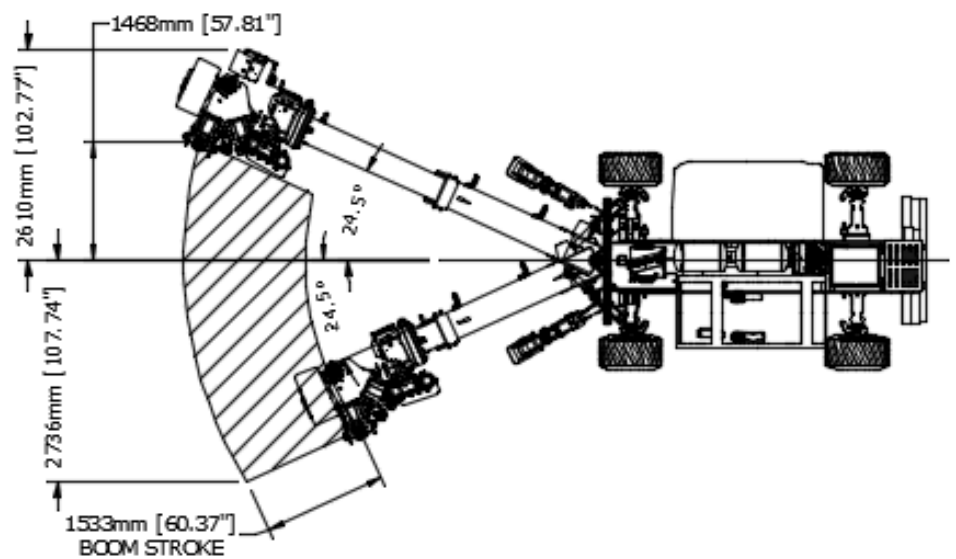
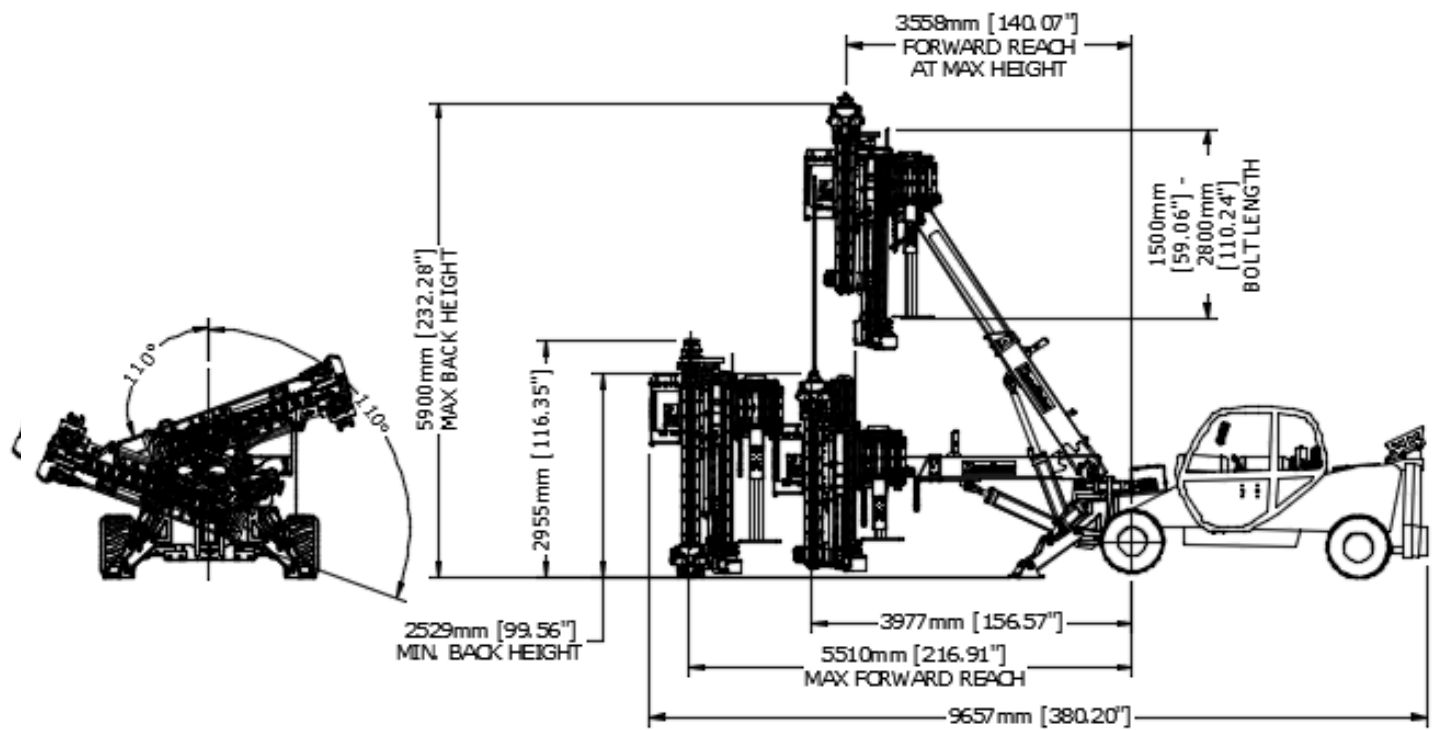
- Front and rear LED work lights
- LED spotlight
- Extra fender mounted work lights

Automated Epoxy Injection (Optional)

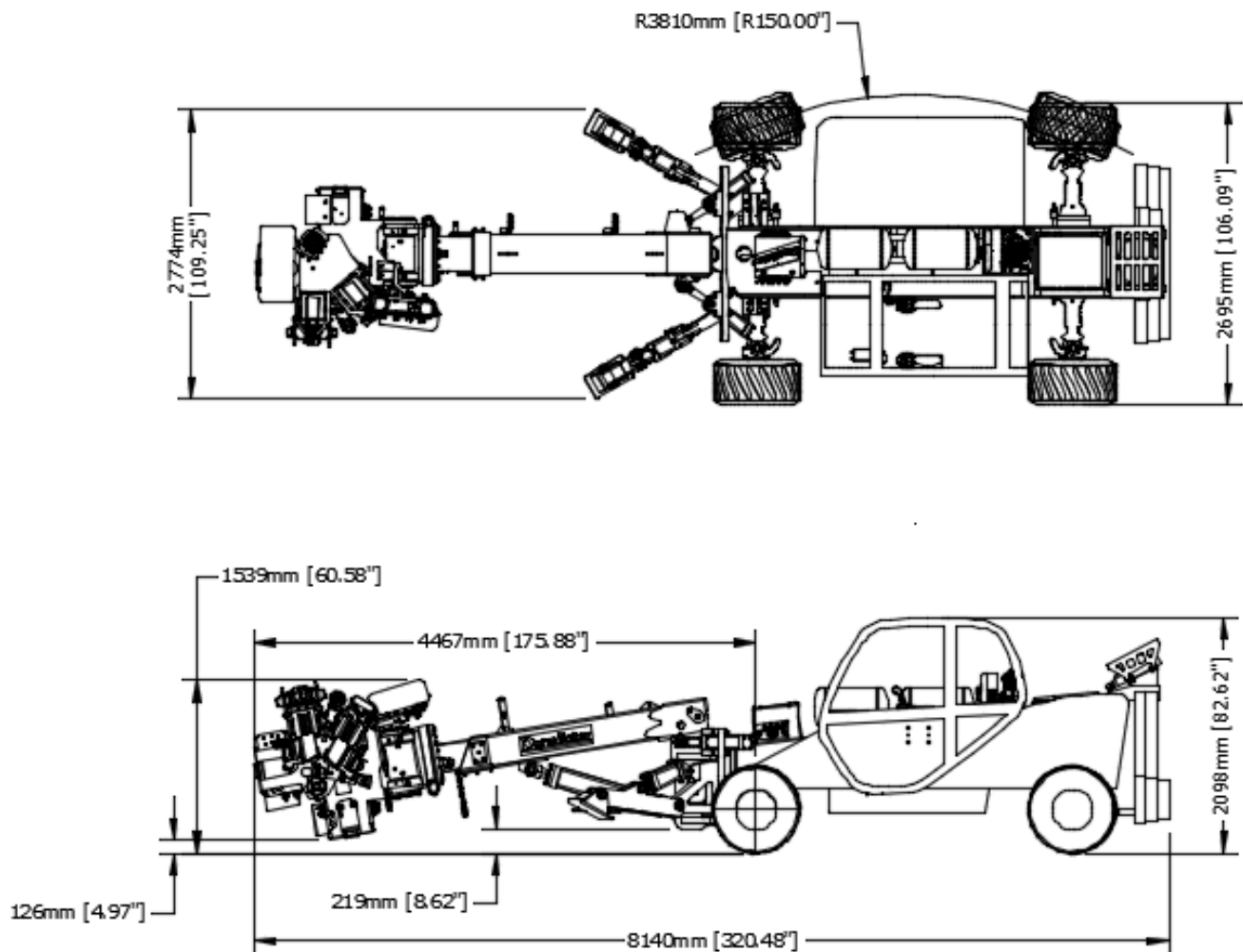
- Epoxy injection controlled from operator's cab
- Epoxy injected using hydraulically driven compressed air
- Separate arm switch and fire button prevents accidental discharge of epoxy
- Smart check system ensures all conditions are met before firing epoxy



BOLTER VIEWS



BOLTER VIEWS





***277 SHERWOOD ROAD
REGINA, SASKATCHEWAN, CANADA
S4P 3A2***

***OFFICE: (306) 359-7088
EMAIL: SALES@DYNABOLTER.COM
WEB: WWW.DYNABOLTER.COM***

